

# Band Pass Filters VHF

## 080 rectangular cavity

Double cavity window coupled band pass filter in the 112-157 VHF range can be allocated in one half 2 unit 19" cabinet. Frequency tuning and window coupling are manually regulated through mechanical knobs. The adjustable window allows for different selectivity settings.



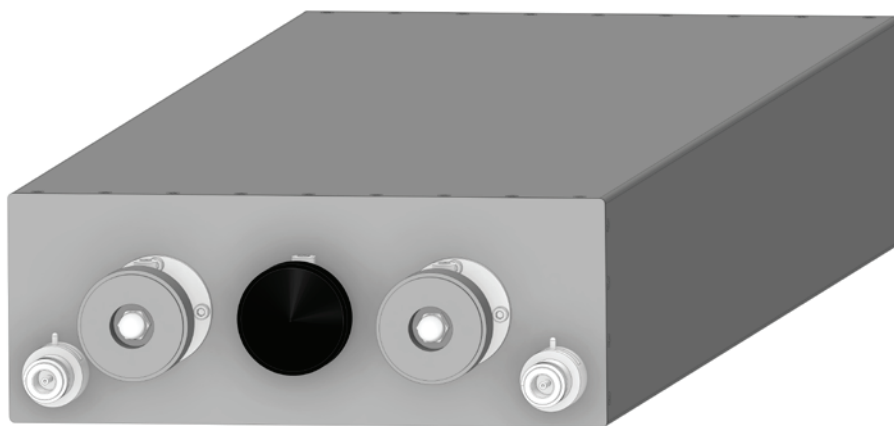
### Electrical Specifications

Frequency band:	112 - 157 MHz
Impedance:	50 $\Omega$
Max Power:	100W CW
Insertion loss:	Adjustable, window coupling, rotating loops

### Mechanical Specifications

Connector Type:	N Female
Dimensions:	1/2 19" rack, 2HU, depth 675 mm
Operating temp.:	-10°C to +55°C
Tuning method:	Rotary knobs, telescopic movement

Band Pass Filters	Channels	Cabinet 2HU	Attenuation
FPB080-V/2 F02ER080M1WDxxxx	1	1/2	20dB $\pm$ 0.4% from $f_0$ 36 dB $\pm$ 1% from $f_0$



FPB080-V/2